



This composition is reflective of the period of New Objectivity, a movement during the modern era of photography. The striking blue sky nearly bisecting the frame provides structure to the composition. The yellow electrical wire is a pleasing touch.

TITLE: FOOD TRUCK LOCATION: AUBURN, AL



I met Dana during my travels to New Orleans. She & three of her bandmembers were busking-street performing-as I crossed their path. The eyes are the focal point of this photograph. They appear soft, almost gentle; yet saddened; as if she is crying. Compositionally, the red background helps separate & give more emphasis to the subject.

TITLE: BUSKING LOCATION: NEW ORLEANS, LOUISIANA



This composition (to the left) has political undertones, although can be interpreted in various ways. The cross is positioned dead center, immediately catching the viewer's attention. Next, the audience processes the text which provides more assurance to the overall context. The graffiti & the palm tree makes one question the setting. A blurred vision of the American flag appears, adding more discord & tensions to the composition.

(to the right) Using elements of framing creates a static composition here. The rich texture of the weathered wood creates a nice contrast as a b&w photograph. The negative space between the doors bisects the frame. This directs your eye upward to notice the missing boards, adding balance to the space. Furthermore, the upside-down crosses found in the doors presents religious overtones.



TITLE: NEGATIVE SPACE LOCATION: FT. VALLEY, GA

TITLE: QUIET ZONE LOCATION: NEW ORLEANS, LA



This photograph was taken inside an abandoned milking barn. It reiterates the theme of mass industrialization. The wheel, a symbol of human progress & social advancement, is rusted & worn. Ironically, its purpose has been forgotten, neglected, & outdated. The way the light exposes the tread's tapered condition while simultaneously playing with the light by casting shadows of the spokes & window grids provides a strong composition.



TITLE: THE WHEEL LOCATION: ALBURN, ALABAMA



There are numerous underlying themes within this piece. First, it illustrates the frailty of life. The strong shapes found in the glass capture immediate attention. The photograph illustrates themes of transparency & isolation. The reflection seen in the piece of glass symbolizes ideals of inner & self-reflection. The setting of this composition was inside a dilapidating milling barn. The pop of green located in the top left demonstrates a nice bokeh effect & aids in balancing the surrounding earthtones/mid-tones.

TITLE: UNTITLED LOCATION: ALBURN, ALABAMA

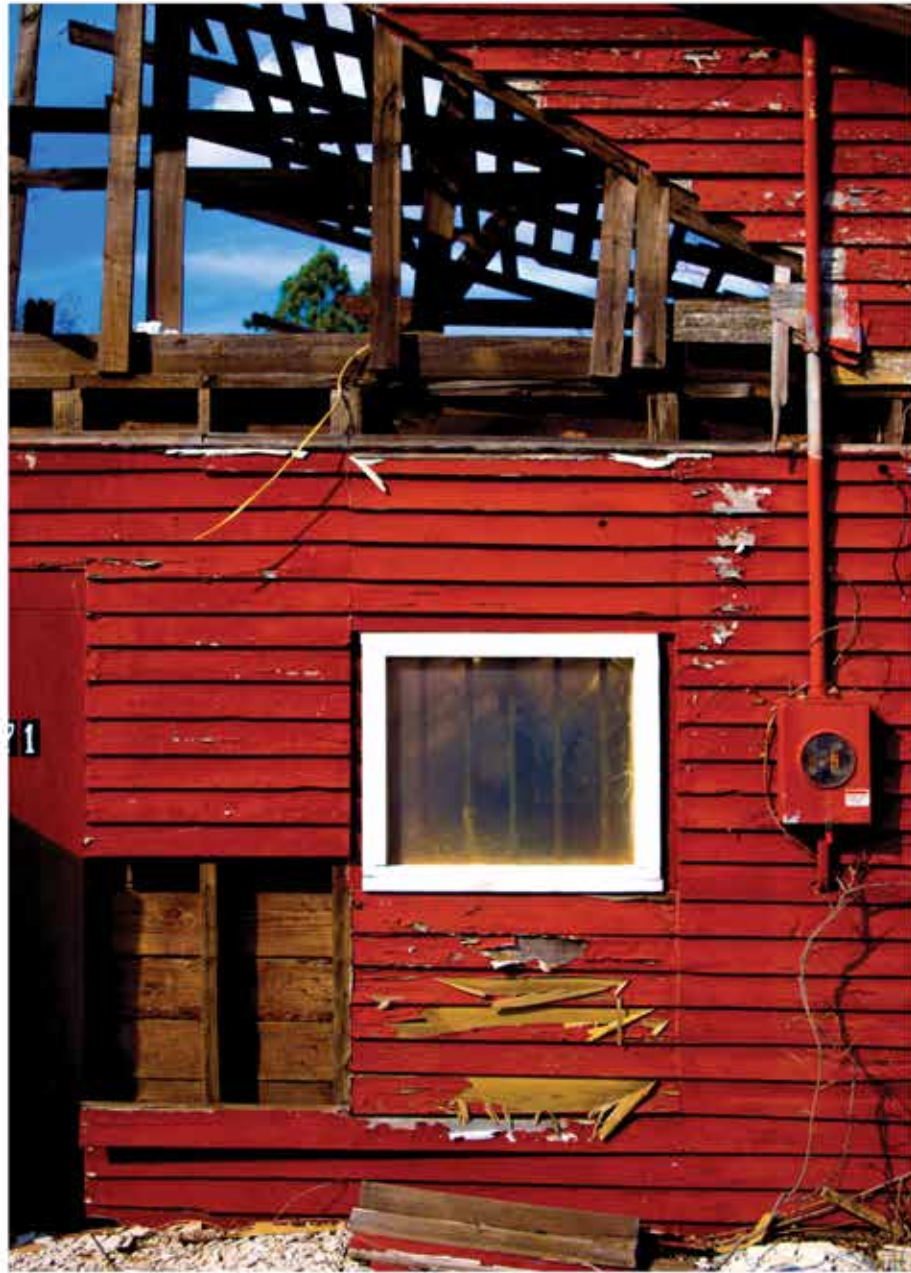


On my travels home from Savannah, GA I encountered an old barn for farming equipment & machinery. There I found this rustic, vintage model ford. It serves as an homage to its past & insight to the future. The classic forms, of the popular model are found in the headlights & shape of the grill. Additionally, the hood demonstrates elements of streamlining found in the 1930-1950's.



TITLE: FORD LOCATION: FT. VALLEY, GEORGIA





(to the left) I encountered this scene traveling through Alabama. The current state of distress & vividness of the colors are what initially caught my attention. There was clearly a fire that caused its destruction. The balance of the primary colors: red, blue, & yellow are what make this composition striking.

TITLE: RED, YELLOW, & BLUE LOCATION: GENEVA, AL



(to the right) The use of the rule of thirds creates a strong composition. There is a theme of progress. The hand prints evoke a child-like quality. This emphasizes the idea that "children are the future". The mailboxes aligned vertically representing the stages of adulthood.

TITLE: HANDS LOCATION: AUBURN, AL